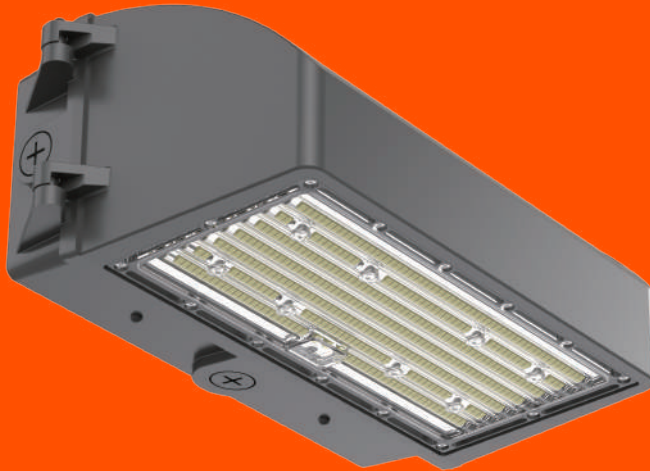


### Full Cutoff Wall Pack

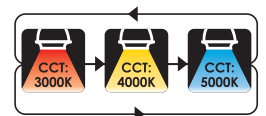


### Technical Specifications

Model No.:	WP12-80M-CS-3CCT
Input Power	80W/70W/60W/50W Adjustable
Lumens	10400 LM
Efficiency	130 LM/W
Lighting Distribution	TYPE III
Input Voltage	120-347V
CCT	3K/4K/5K Adjustable
CRI	>70
LED Type	2835
THD	<%20
Surge Protection	L-N : 2KV L/N-PE: 4KV
Additional Function	0-10V Dimming / Power Adjustable
Certification	ETL / cETL / DLC Premium
IP Rating	IP65
IK Rating	IK08
Product Finishing	Bronze
Housing	IK08 High-duty Die-cast Aluminum
Lens	Polycarbonate Lense
Life Time	50/000 Hours
Operating Temperature	-22°F to 113°F
Power Factor	≥0.90
Installation	Junction box
Warranty	5 Years Limited

### Description:

VOTATEC's LED Full cutoff wall packs provide die-casting aluminium alloy heat sink. Detachable shaft - allows for easy access to install and repair. This is an ideal commercial outdoor fixture for buildings, and easily replace to any wall packs light, no matter full cut-off wall packs or semi cut-off wall packs.



### Optional Features

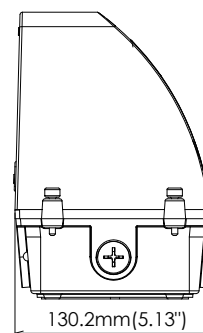
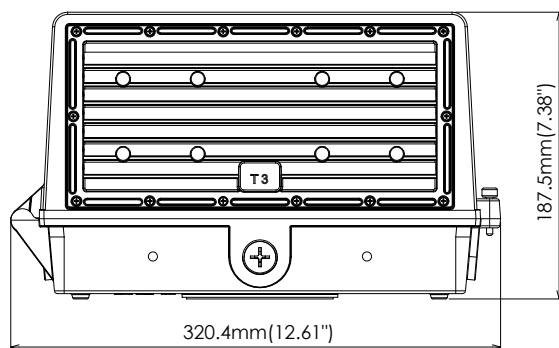
- 120-347VAC
- High Efficacy to 130LM/W
- ETL/cETL , DLC 5.1 Premium Listed
- Type III distribution optics standard
- CCT Selectable and Wattage Switchable

### Features



DIP switch inside the box, lower inventory

### Dimensions



30W / 40W / 50W / 60W / 80W / 100W / 120W  
(120-347Vac)

